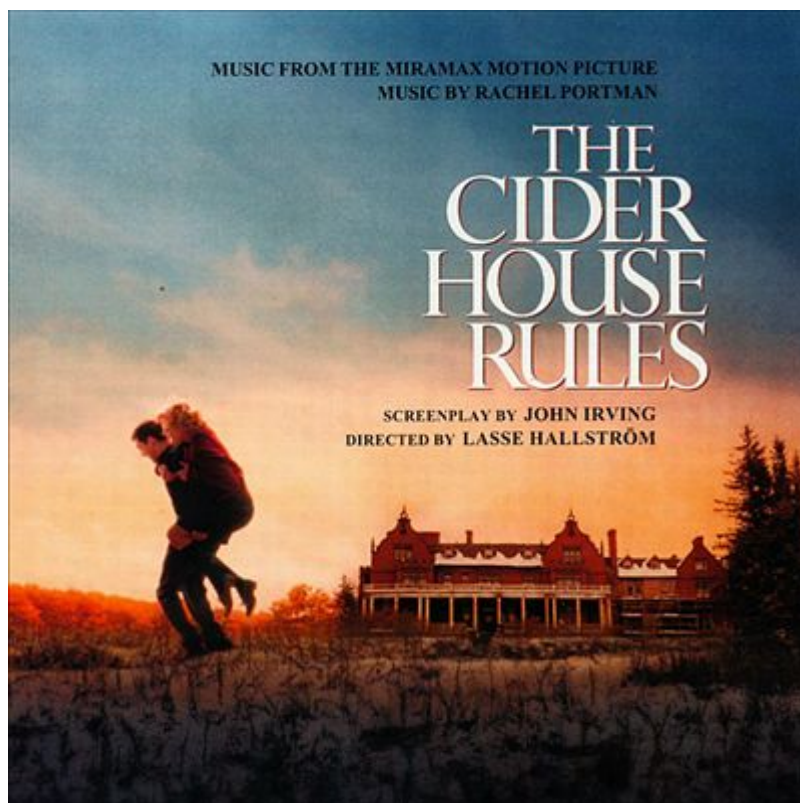


[Rachel Portman](#)

Main Titles

(Brano Strumentale tratto dal film " [Le Regole Della Casa Del Sidro](#) ", 1999, di Lasse Hallström)

{qtube vid:=q2H8p4uqCZ0}



(Album: 'The Cider House Rules', 1999, di Rachel Portman)

FROM THE BESTSELLING NOVEL BY JOHN IRVING

A story about how far
we must travel to find
the place where we belong.

THE CIDER HOUSE RULES

TOBEY MAGUIRE CHARLIZE THERON DELROY LINDO PAUL RUDD AND MICHAEL CAINE

MPRAVIX FILMS PRESENTS A FILM BY LASSE HALLSTRÖM "THE CIDER HOUSE RULES" JANE ALEXANDER KATHY BAKER KIERAN CULIN
HENRY D. KATE NEELGAN PRODUCED BY BRUSH BARD PRODUCED BY HOPKINS SMITH & BAIRD PRODUCED BY RACHEL PORTMAN COSTUME DESIGNER RENE EBRUCH-KALIN EXECUTIVE PRODUCERS
DAVID GULPMAN EXECUTIVE PRODUCERS COLTER STAPLETON EXECUTIVE PRODUCERS ALAN C. BLOMQUIST LESLIE HOLLERAN EXECUTIVE PRODUCERS BOB WEINSTEIN HARRY WEINSTEIN BOBBY COHEN MERIL POSTER
SCREENPLAY BY JOHN IRVING DIRECTED BY LASSE HALLSTRÖM PERIMAX

SCREENPLAY BY JOHN IRVING · DIRECTED BY LASSE HALLSTRÖM

